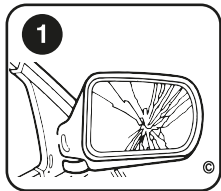
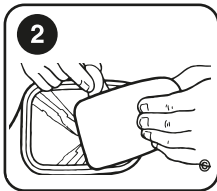


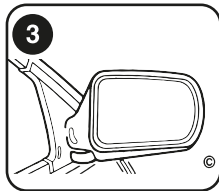
Fit your replacement mirror in three easy steps:



1. Your new replacement mirror glass will fit on top of the original broken mirror glass, if your glass is completely missing, you will need a Summit replacement mirror glass complete with plastic backing. Carefully remove any loose glass and brush off any small particles. Do not remove any glass unnecessarily, as this will provide a sound base for the new glass to stick onto.



2. Before fitting the glass practice to ensure that you can line it up in the correct position, as the sticky pad is very strong. Remove the backing paper from the sticky pad, line up the mirror glass and gently push the mirror applying even pressure, whilst taking care not to push hard enough to break the mirror.



3. Once fitted clean your mirror using clean water and a soft cloth. You will need to readjust your mirror position after fitment.

Note: If your original mirror glass is heated this function will still work and will heat through your new replacement mirror glass. Please wear protective gloves when handling broken glass.